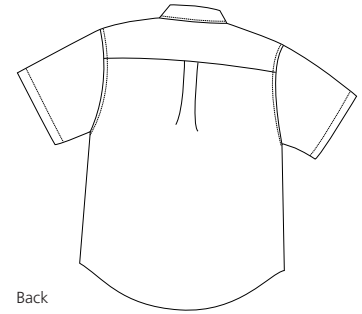


Short Sleeve Value Oxford

PORT & COMPANY®



Front



Back

SP16

- * 4.3-ounce * 60/40 cotton/poly * Back pleat * Tuck-in tails * Pearlized buttons
- * Button-down collar * Single patch pocket * Double-needle hemmed at the sleeve cuffs

Care Instructions:

Machine wash cold with like colors.
Do not bleach.
Tumble dry low.
Warm iron if necessary.

Finished Measurements in Inches

Size	XS	S	M	L	XL	2XL	3XL	4XL
Chest	20	21.5	23	24.5	26	27.5	29	30.5
Body	26.5	28.5	32	32.5	34	34.5	35.5	36
Sleeve	8	9	10	10.5	11	11.5	12	12.5
Collar	15.5	16	16.5	17	17.5	18	18.5	19
Pocket WxL	4.5x5	4.5x5	4.62x4.12	4.62x4.12	4.62x4.12	4.62x4.12	4.87x5.37	4.87x5.37

Chest width measured 1" below arm hole. Body length measured from back neck seam to hem.
Sleeve length measured from shoulder seam to hem. Collar measured by circumference. Pocket WxH.

Colors

Light Blue

White

Please Note:

Colors shown are approximate and for reference only. For closest match see PMS colors, or for exact match, returnable samples and grommited samples are available.

Color Chart

Color	Light Blue	White
Textile PMS	14-4110TC	11-0601TC
General PMS	2708C	No Match