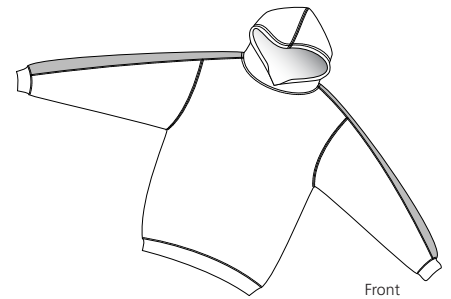
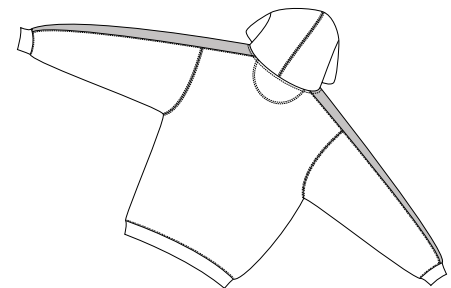


Youth Pullover Hooded Sweatshirt with Stripe

Sport-Tek
By Port Authority®



Front



Back

Y255

* 5.8-ounce * 100% ring spun combed cotton * Jersey knit * 3/4 length raglan sleeves

Care Instructions:

Machine wash cold, gentle cycle.
Only non-chlorine bleach when needed.
Tumble dry low, do not iron.

Finished Measurements in Inches

| Size | XS | S | M | L | XL |
|--------|-----|------|------|----|----|
| Width | 13 | 15 | 17 | 19 | 21 |
| Length | 17 | 19 | 21 | 24 | 26 |
| Sleeve | 21 | 24 | 27 | 30 | 33 |
| Neck | 9.5 | 9.75 | 9.75 | 10 | 10 |

Chest width measured 1" below armhole. Body length measured from center back neck seam to hem.
Sleeve length measured from center back neck seam to hem. Neck width measured from seam to seam.

Colors

| | |
|--|------------------------|
| | Black/White |
| | Athletic Heather/White |
| | Dark Green/White |
| | Navy/White |
| | Red/White |
| | Royal/White |

Please Note:

Colors shown are approximate and for reference only. For closest match see PMS colors, or for exact match, returnable samples and grommeted samples are available.

Color Chart

| Colors | Black | Athletic Heather | Dark Green | Navy | Red | Royal |
|-------------|---------------|------------------|------------|-----------|-----------|-----------|
| Textile PMS | 19-4203TC | No Match | 19-5320TC | 19-4010TC | 19-1764TC | 19-3864TC |
| General PMS | Process Black | No Match | 5535C | 532C | 187C | 661C |