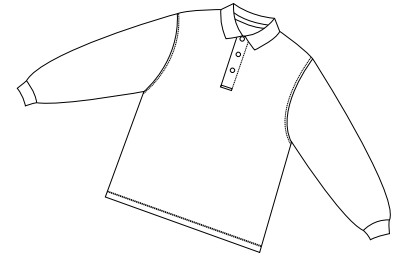
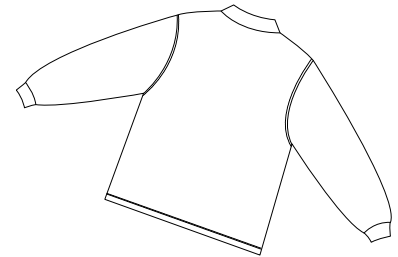


# Youth Long Sleeve Pique Knit Sport Shirt

PORT AUTHORITY®



Front



Back

## Y320

- \* 7-ounce \* 100% ring spun combed cotton pique \* Garment washed \* Welt collar
- \* Locker patch \* Rib knit cuffs \* Double-needle stitching \* Side vents
- \* Pewter tone buttons \* Two or three button placket depending on size

### Care Instructions:

Machine wash cold with like colors.  
Do not bleach.  
Tumble dry low.  
Warm iron if necessary.

### Finished Measurements in Inches

| Size   | XS(2-4) | S(6-8) | M(10-12) | L(14-16) | XL(18-20) |
|--------|---------|--------|----------|----------|-----------|
| Chest  | 14.25   | 16.5   | 17       | 18       | 19        |
| Body   | 17.5    | 19.5   | 22       | 24.5     | 27        |
| Sleeve | 18.5    | 19.5   | 20.5     | 21       | 21.5      |

Chest width measured 1" below arm hole. Body length measured from back neck seam to hem. Sleeve length measured from shoulder seam to hem. Collar measured by circumference.

### Colors

|  |             |
|--|-------------|
|  | Black       |
|  | Dark Green  |
|  | Faded Olive |
|  | Navy        |
|  | Oxford      |
|  | Red         |
|  | Royal       |
|  | White       |
|  | Wine        |
|  | Yellow      |

### Please Note:

Colors shown are approximate and for reference only. For closest match see PMS colors, or for exact match, returnable samples and grommited samples are available.

### Color Chart

| Colors      | Black         | Dark Green | Faded Blue | Navy      | Oxford    |
|-------------|---------------|------------|------------|-----------|-----------|
| Textile PMS | 19-4006TC     | 19-5320TC  | No Match   | 19-3920TC | No Match  |
| General PMS | Process Black | 5535C      | 7455C      | 533C      | No Match  |
| Colors      | Red           | Royal      | White      | Wine      | Yellow    |
| Textile PMS | 19-1764TC     | 19-4044TC  | 11-0601TC  | 19-1617TC | 12-0826TC |
| General PMS | 187C          | 294C       | No Match   | 505C      | 1215C     |