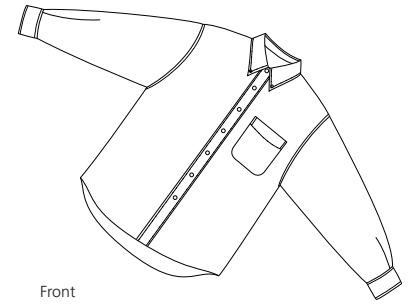
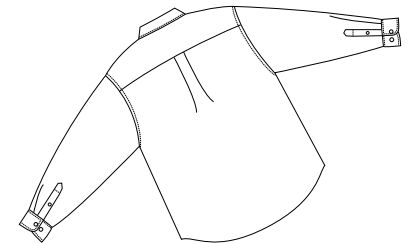


Youth Value Denim Shirt

PORT & COMPANY®



Front



Back

YSP10

- * 6.5-ounce * 100% cotton denim * Garment washed * Generous cut
- * Double-needle stitched * Tuck-in tail * Button-down collar * Horn tone buttons
- * Patch pocket

Care Instructions:

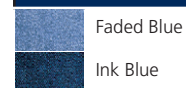
Machine wash cold with like colors.
Do not bleach.
Tumble dry low.
Warm iron if necessary.

Finished Measurements in Inches

Size	XS(2-4)	S(6-8)	M(10-12)	L(14-16)	XL(18-20)
Chest	14.5	18	19.5	21	22.5
Body	14.5	25	27	29	31
Sleeve	24	27	28.5	30	37.5
Pocket	3.5x4	4.25x4.75	4.25x4.75	4.25x4.75	4.25x4.75

Chest width measured 1" below arm hole. Body length measured from back neck seam to hem.
Sleeve length measured from shoulder seam to hem. Collar measured by circumference. Pocket HxW.

Colors



Faded Blue

Ink Blue

Please Note:

Colors shown are approximate and for reference only. For closest match see PMS colors, or for exact match, returnable samples and grommated samples are available.

*Due to a special washing process, colors may vary

Color Chart

Color	Faded Blue	Ink Blue
Textile PMS	No Match	No Match
General PMS	No Match	No Match